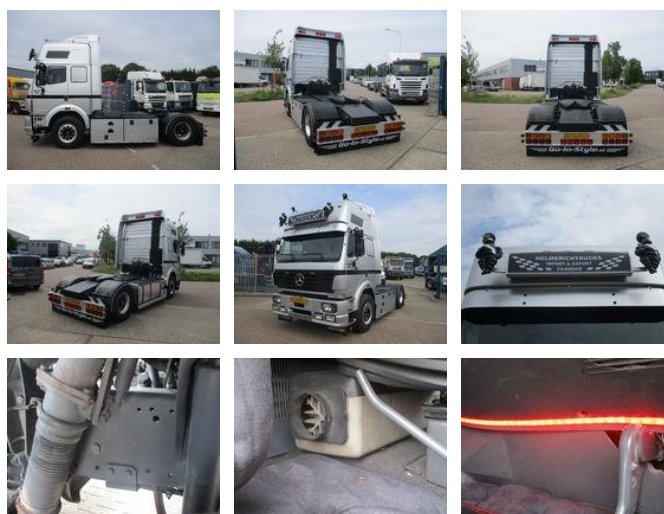


Helmerich Trucks

Mercedes-Benz SK 1850 V8 1850 SK EURO CAB POWERLINER SHOWTRUCK FULLAIR HOLLAND TRUCK GOODCONDITION

General features

Brand	Mercedes-Benz
Model	SK 1850 V8
Subcategory	Cab over engine
Licence plate	BDGT10
Odometer reading	1.205.031km
Construction year	1995
Date of first registration	15-09-1995
Color	grey
Condition	Used
General condition	Good
Fuel	Diesel
Emission class	Euro 1



Characteristics

Empty weight	7.810kg
Max. weight	18.000kg
Length	610cm
Width	255cm
Cabin	full

Serial number

WDB6555921K113675

Cylinder contents

14.618cc

Mercedes-Benz SK 1850 V8 1850 SK EURO CAB POWERLINER SHOWTRUCK FULLAIR HOLLAND TRUCK GOODCONDITION

Technical specifications

Number of axes	2
Axis configuration	4x2
Transmission	Semi-automatic
assets	500hp

Accessories

- Anti-lock braking system
- Aluminium fuel tank
- Cruise control
- Roof spoiler
- Electrically operated windows
- Toolbox
- Air horn
- Air suspension
- Sleeper cab
- Vehicle heater
- Spotlights
- Visor
-
- Electrically adjustable door mirrors
-
-